



A warm welcome to Juniper Elimatta

Juniper Elimatta is a warm and welcoming Residential Aged Care Home located just north of Perth, on the doorstep of Mount Lawley.

Conveniently located next to Elimatta Retirement Living Village, residents are free to enjoy the courtyards and participate in lifestyle and therapeutic activities. Families are invited to spend time together in the cosy lounge areas, and the much-loved sunroom or participate in activities.

A compassionate and respectful team of staff support residents to continue pursuing their own interests, backed by individualised clinical care.

The DINE Experience

At Juniper, we believe food is one of life's greatest pleasures, and serving wholesome, nutritious meals is the key to supporting our residents to live their best life.

Each resident enjoys food from our DINE (Dignity In Nutritional Excellence) initiative. Our seasonally-driven menus are designed by our chefs and prepared daily at our on-site kitchen using local, quality ingredients.



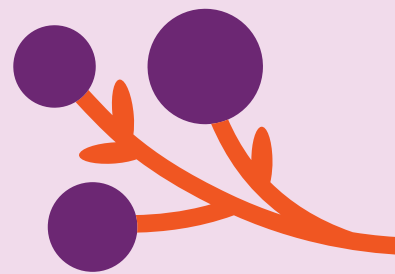
“Family like care, very careful of resident’s needs, good kitchen and lots of entertainment for happy times.”

- Lorena, resident’s family



Address:

45 Alexander Dr, Menora WA 6050, Australia





Home Features

- 42 single rooms with ensuite
- Individualised support through our person-centred care approach
- Enabled Dementia Care with a memory support unit
- Communal spaces including multiple dining rooms, large central activity room and lounge areas
- Courtyards and gardens
- Juniper Connect Video Calling
- Laundry and domestic help services



Lifestyle and Amenities

- Therapy and lifestyle group activities
- Group and individual exercise programs
- Resident supported outings
- Hair salon
- Beautician
- Pastoral and Spiritual Care
- Palliative Care



Clinical Care

- 24/7 nursing care
- Regular clinical assessments
- Medication management
- Physiotherapy
- Occupational therapy
- Dietician
- Podiatrist
- Speech pathology



Your neighbourhood

Juniper Elimatta is located close to the thriving Mt Lawley's Beaufort Street and North Perth's Angove and Fitzgerald Streets. For a quiet stroll, the beautiful Yokine Open Space is close-by. Our residents, their families and visitors enjoy the convenience of nearby transport, shopping, parks and cafes.



Meet Residential Manager

Shila Rathnayake

With more than 15 years' experience in aged care, Shila brings an incredible insight to her role as Residential Manager at Elimatta.

Shila honed her extensive skills after working as a Registered Nurse in acute/hospital and aged care settings for a decade including five years at management level.

Extremely passionate about the holistic wellbeing of older people, Shila believes that her role is an opportunity to show her gratitude to customers for their contributions to their communities.

Ever supportive of her team, Shila always strives to deliver quality care to benefit residents and their families across the Elimatta family.