



# A warm welcome to Juniper St David's

With a home-like atmosphere, welcoming staff, and active lifestyle calendar, residents can immediately feel they belong to the Juniper St David's community.

With just 46 rooms, the small home in the heart of Mt Lawley is spread across three levels with communal spaces on each level for residents to socialise, relax or choose to take part in the social calendar of activities and outings.

Each private room with ensuite boasts its own small balcony where residents can enjoy the outdoors and view. Residents are welcome to freely personalise their rooms to make them feel just right.

## St David's Campus

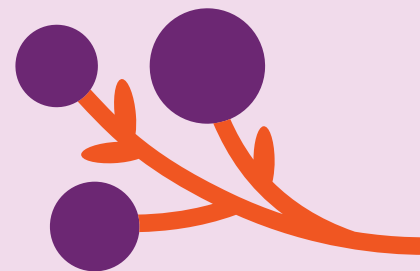
Located together with St David's Retirement Living, residents are able to enjoy shared grounds, activities, amenities and a wonderful, vibrant community.

Residents can take a stroll through the gardens, join in an activity run by the Retirement Living community or enjoy the spacious lounge and kiosk selling coffee, tea and cake.

## The DINE Experience

At Juniper, we believe food is one of life's greatest pleasures, and serving wholesome, nutritious meals is the key to supporting our residents to live their best life.

Each resident enjoys food from our DINE (Dignity In Nutritional Excellence) initiative. Our seasonally-driven menus are designed by our chefs and prepared daily at our on-site kitchen using local, quality ingredients.



### Address:

17-19 Lawley Crescent, Mount Lawley 6050



## Home Features

- 46 single rooms with ensuites and private balcony
- Individualised support through our person-centred care approach
- Dining room, lounges, library and activity areas
- Juniper Connect video calling
- Laundry and domestic help services



## Lifestyle and Amenities

- Therapy and lifestyle group activities
- Group and individual exercise programs
- Resident supported outings
- Hair salon
- Pastoral & Spiritual Care
- Chapel



## Clinical Care

- 24/7 nursing care
- Regular clinical assessments
- Medication management
- Physiotherapy
- Occupational therapy
- Dietitian (as required)
- Podiatrist
- Speech pathology (as required)
- Palliative Care



## Your neighbourhood

Juniper St David's is located close to thriving Mt Lawley's Beaufort Street. Our residents, their family and visitors enjoy the convenience of nearby transport, shopping, parks and cafes.



## Meet Residential Manager

### Rose Bonete

With close to 15 years' experience as a Registered Nurse in aged care, Rose Bonete returned to Juniper with a wealth of knowledge and expertise that aligns with our core values.

Rose has a strong focus on caring for older people and limitless enthusiasm to make aged care a better place for residents, their families and fellow staff.

Rose is an active listener who puts the needs of her residents and their families first. Her strong leadership and passion for excellence ensures that each resident is provided with the individual care that they truly deserve.