



# A warm welcome to Juniper Hillcrest

Welcome to Juniper Hillcrest Residential Aged Care, a friendly home in the heart of Geraldton. Only minutes from the city centre and oceanside, Juniper Hillcrest continues to be a highly sought-after aged care home.

Residents enjoy a range of onsite amenities, including therapy and group activities, bus trips, an onsite salon, and exercise programs. Juniper Hillcrest strikes a perfect balance between the outdoors and cozy indoor spaces, with spacious verandas, inviting dining areas, and engaging activity spaces.

A compassionate and respectful team of staff support residents to continue pursuing their own interests, backed by individualised clinical care. With the home a significant part of the district and enabling older people to stay close to their family, friends and community, connections with local community groups for the benefit of residents make up an important part of the home.

## The DINE Experience

At Juniper, we believe food is one of life's greatest pleasures, and serving wholesome, nutritious meals is the key to supporting our residents to live their best life.

Each resident enjoys food from our DINE (Dignity In Nutritional Excellence) initiative. Our seasonally-driven menus are designed by our chefs and prepared daily at our on-site kitchen using local, quality ingredients.



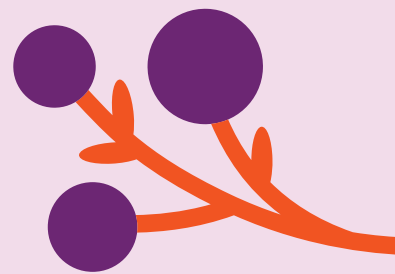
**“Our Nana lives there at the moment. She loves the environment and their lovely staff. She gets all the best care and treatment that makes her feel like home.”**

– Ratna Clifford



### Address:

40 Onslow St, Geraldton WA 6530





## Home Features

- 80 single rooms with ensuite
- Individualised support through our person-centred care approach
- Enabled Dementia Care
- Communal spaces including multiple dining rooms, large central activity room and lounge areas
- Access to courtyards and gardens
- Laundry and domestic help services



## Clinical Care

- 24/7 nursing care
- Regular clinical assessments
- Medication management
- Wellness Centre
- Physiotherapy
- Occupational therapy
- Dietitian
- Podiatrist
- Speech pathology
- Palliative Care



## Lifestyle and Amenities

- Therapy and lifestyle group activities
- Group and individual exercise programs
- Resident supported outings
- Hair salon
- Chapel
- Men's Garage
- Pastoral & Spiritual Care



## Your neighbourhood

Juniper Hillcrest is located only minutes from the centre of Geraldton and oceanside. Residents, their families and visitors enjoy the convenience of nearby community centres, public transport, shopping, parks, cafés and recreation choices.



## Meet Residential Manager

### Beth Thompson

Beth joined the Juniper Hillcrest team in 2011 bringing with her a wealth of experience from her previous role as Care Manager.

With a background as an Enrolled Nurse, Beth's expertise and understanding of the industry are truly valuable. She has a genuine passion for providing the highest quality of care to residents. While understanding the clinical needs of residents, it's Beth's genuine care for the residents and staff that truly sets her apart.

Beth is a strong advocate for enabling older individuals to maintain their independence. She firmly believes in empowering residents to live life on their own terms. With her values-centred approach, she brings a strong focus on nurturing the well-being of residents.