



# A warm welcome to Juniper John Bryant

A comfortable and homely atmosphere surrounds residents of Juniper John Bryant. With just 42 rooms, the small home has three houses across a single-storey, with each house benefitting from its own dining space and communal areas.

A smaller home enables the residents to become familiar and comfortable with their surroundings quicker when arriving.

With a focus on excellence in dementia-enabled care and greater care needs, residents are free to access all around the home and the many courtyards and gardens, as well as the seating nooks scattered around the home.

Residents can choose to take part in the active lifestyle calendar of activities, with a large activity space playing host to a range of activities from group exercise like balloon hockey to art and craft to concerts.

Residents are welcome to freely personalise their large private room with ensuite to make it feel just right.



**“It is not easy giving up your love to a residential aged care home, but I have won the lotto with Juniper John Bryant. They are kind and caring, and always offer us both so much support.”**

- Brian, resident’s family



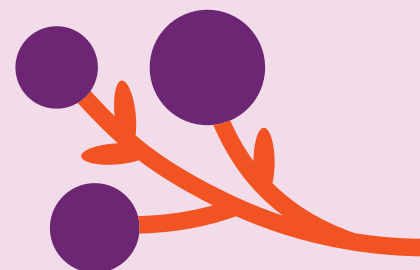
**Address:**

95 Rawlinson Dr, Marangaroo WA 6064

## The DINE Experience

At Juniper, we believe food is one of life’s greatest pleasures, and serving wholesome, nutritious meals is the key to supporting our residents to live their best life.

Each resident enjoys food from our DINE (Dignity In Nutritional Excellence) initiative. Our seasonally-driven menus are designed by our chefs and prepared daily at our on-site kitchen using local, quality ingredients.





## Home Features

- 42 large single rooms with ensuites
- Individualised support through our person-centred care approach
- Enabled Dementia Care
- Several dining rooms, lounges and large activity area
- Free access to outdoor areas and gardens
- Juniper Connect video calling
- Laundry and domestic help services



## Lifestyle and Amenities

- Therapy and lifestyle group activities
- Group and individual exercise programs
- Resident supported outings
- Hair salon
- Pastoral & Spiritual Care



## Clinical Care

- 24/7 nursing care
- Regular clinical assessments
- Medication management
- Physiotherapy
- Occupational therapy
- Dietitian
- Podiatrist
- Speech pathology
- Palliative Care



## Your neighbourhood

Conveniently connected to public transport, Juniper John Bryant is very close to Marangaroo's major shopping centre and parklands.



## Meet Residential Manager

### Tendai Zinduru

Tendai is a dedicated registered nurse with 20 years' experience in residential aged care, acute care and aged care clinical management.

Holding a Master of Clinical Nursing (Gerontology), she has worked extensively with clients living with dementia, deepening her understanding of their unique challenges and reinforcing the importance of personalised care and empathy in enhancing their quality of life.

Tendai is committed to fostering a culture of compassion and respect in the workplace and actively empowers families and colleagues to contribute positively to the care environment.

She is also deeply passionate about education and mentoring, believing that sharing knowledge and expertise not only strengthens our healthcare community but also nurtures future leaders.