



A warm welcome to Juniper Numbala Nunga

Juniper Numbala Nunga Residential Aged Care Home in Derby is a home where you can feel safe, happy, and connected to the local community and culture.

We believe in providing tailor-made, culturally appropriate care to each of our residents and taking the time to get to know them individually. Our staff are committed to making each day fulfilling and enjoyable for our residents, allowing them to maintain crucial connections to their family, friends, and culture.

Juniper Numbala Nunga operates two residential aged care homes in Derby – Ngamang Bawoona and Numbala Nunga. Located opposite each other on Sutherland Street, both homes offer high and low-care options. Additionally, both shared and single rooms are available, with a total of 43 beds to accommodate residents. The layout is designed around a beautiful internal garden area, with rooms opening directly to the veranda and outdoor space.

We offer a variety of activities, ranging from painting, craft afternoons, and socialising through yarning to fishing trips. We organise weekly outings to church and community excursions, enabling our residents to experience a range of social activities.

From 1 April 2023, Ngamang Bawoona and Numbala Nunga were registered under one name by the Department of Health and Aged Care. This change does not affect our residents' accommodation or services, and Ngamang Bawoona has retained its house name. We acknowledge the importance and cultural significance of the name Ngamang Bawoona and will continue to use this name with our residents and their families.



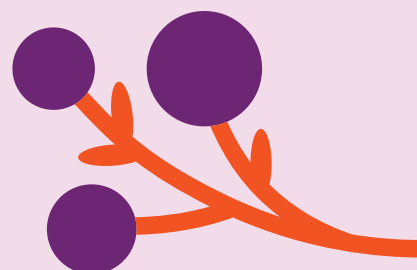
Address:

37 Sutherland St, Derby WA 6728

The DINE Experience

At Juniper, we believe food is one of life's greatest pleasures, and serving wholesome, nutritious meals is the key to supporting our residents to live their best life.

Each resident enjoys food from our DINE (Dignity In Nutritional Excellence) initiative. Our seasonally-driven menus are designed by our chefs and prepared daily at our on-site kitchen using local, quality ingredients.





Home Features

- Juniper Numbala Nunga - 13 single rooms and 7 double rooms all with ensuites
- Juniper Ngamang Bawoona - 3 single rooms and 7 double rooms all with ensuites
- Individualised support through our person-centred care approach
- Enabled Dementia Care
- Communal spaces including multiple dining rooms, large central activity room and lounge areas
- Access to courtyards and gardens
- Laundry and domestic help services



Lifestyle and Amenities

- Therapy and lifestyle group activities
- Pastoral & Spiritual Care
- Sunday Church service



Clinical Care

- 24/7 nursing care
- Regular clinical assessments
- Medication management
- Physiotherapy
- Occupational therapy
- Dietician
- Podiatrist
- Speech pathology



Your neighbourhood

Located in Derby, a town in the Kimberley region of Western Australia, Juniper Numbala Nunga Residential Aged Care Home has a strong connection to community. Residents also have easy access to nearby medical services, community centres and parks.



Meet Residential Manager

Chris Manu

Chris Manu brings over three years of dedicated aged care experience to her role as Residential Manager. With a background as a carer, she rose to leadership as a Scheduling Team Leader working for an aged care agency across Fitzroy, Kununurra, Derby, and Albany.

Chris joined the Juniper team in September 2021, and brought her contagious enthusiasm to enrich the lives of residents. Her ultimate satisfaction comes from seeing her residents happy and comfortable within their home. Chris has a deep understanding of the needs of her residents and has established strong bonds with the local community and Elders. Chris's experience, coupled with her genuine passion for improving lives, makes her an invaluable asset to Juniper.