



A warm welcome to Juniper The Residency

Surrounded by greenery and continuously connected to large outdoor spaces, Juniper The Residency offers light-filled interiors, large rooms and a homely environment.

Split into two wings, including a dementia-enabled care wing, each of the 45 extra-large rooms boast their own private balcony or patio which residents and their families are free to personalise. Connection to the outdoors is an ongoing theme through the home, with large gardens and courtyards, including space for the chickens, budgies, finches and resident cat.

Each wing has its own dining space, activity room and lounges for residents to enjoy and relax in. The home has an active social calendar of events and activities, which residents can partake in as much or as little as they choose. Residents can also choose to join bus outings, including reminiscence drives throughout the district.

The team pride themselves on the close relationships built between long-term staff, residents, their families, and the local community. Juniper The Residency allows residents to continue living close to family and friends and within the community they love.



“Beautiful place with beautiful staff. Mum is so happy and she is loved and cared for as good as we were caring for her. Can’t find a fault.”
– Google Review, resident’s family

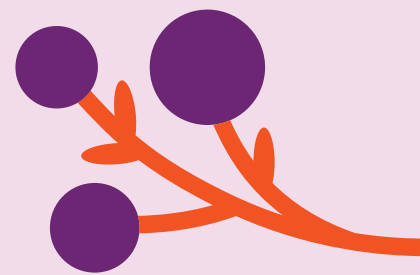


Address:

47-57 Burgoyne Street, Northam WA 6401

The DINE Experience

At Juniper, we believe food is one of life’s greatest pleasures, and serving wholesome, nutritious meals is the key to supporting our residents to live their best life. Each resident enjoys food from our DINE (Dignity In Nutritional Excellence) initiative. Our seasonally-driven menus are designed by our chefs and prepared daily at our on-site kitchen using local, quality ingredients.





Home Features

- 39 large single rooms and 6 large shared rooms with ensuites.
- Individualised support through our person-centred care approach
- Enabled Dementia Care
- Light-filled dining rooms, lounges and activity areas.
- Family lounge with access to private courtyard and BBQ
- Spacious outdoor areas and gardens
- Juniper Connect video calling
- Laundry and domestic help



Clinical Care

- 24/7 nursing care
- Regular clinical assessments
- Medication management
- Physiotherapy
- Occupational therapy
- Speech Pathologist (as required)
- Dietitian (as required)
- Podiatrist
- Palliative Care



Lifestyle and Amenities

- Therapy and lifestyle group activities
- Group and individual exercise programs
- Resident supported outings
- Hair salon
- Pastoral and Spiritual Care



Your neighbourhood

With a spacious, green feel, The Residency is conveniently located in Northam just a few minutes drive to the town's shops and cafes, and in close proximity to Juniper Bethavon Residential Aged Care Home.

